



Security Awareness

Not to be distributed or reproduced without permission.



AGENDA



- 1 Preparedness Against Terrorism
- 2 Spotting Terrorists & Suspicious Activities
- 3 Suspicious Person
- 4 Suspicious Articles or Parcels
- 5 Suspicious Vehicles



Prevention

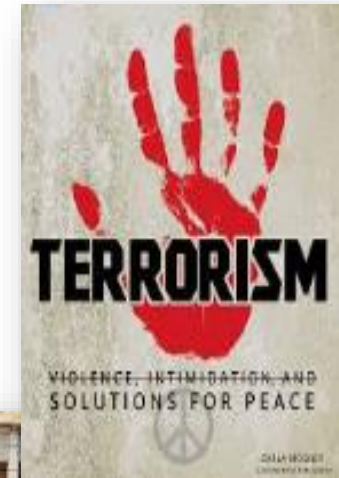
- Everyone, not just security personnel, can play a role in ensuring its building security.
- Cultivate a culture of vigilance and alert of suspicious activities & irregularities

Response

- Be familiar with the evacuation plan
- All staff to be familiar with the emergency procedures

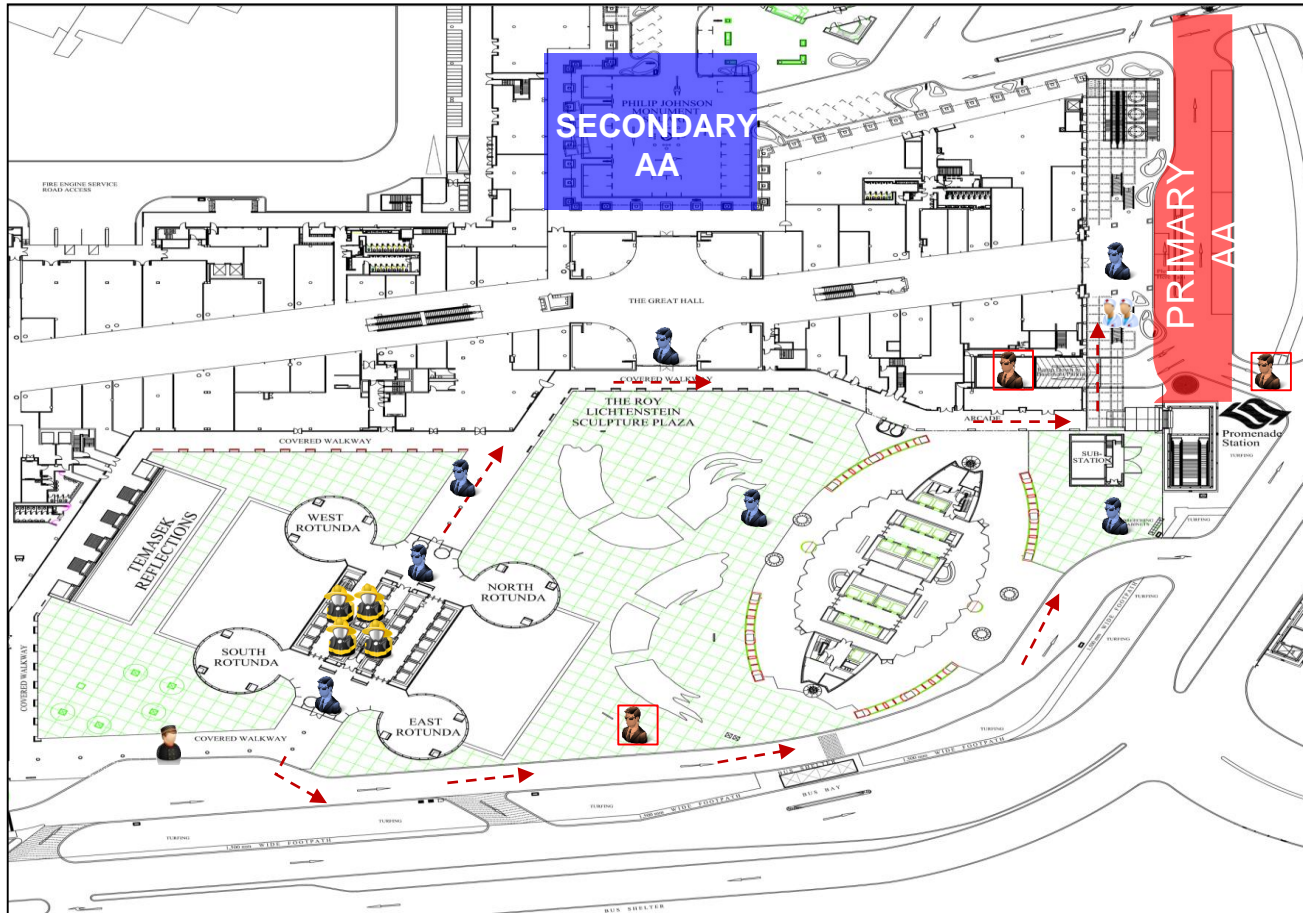
Recovery

- Familiarize with Business Continuity Plan
- How to ensure orderly resumption of services





Millenia Tower

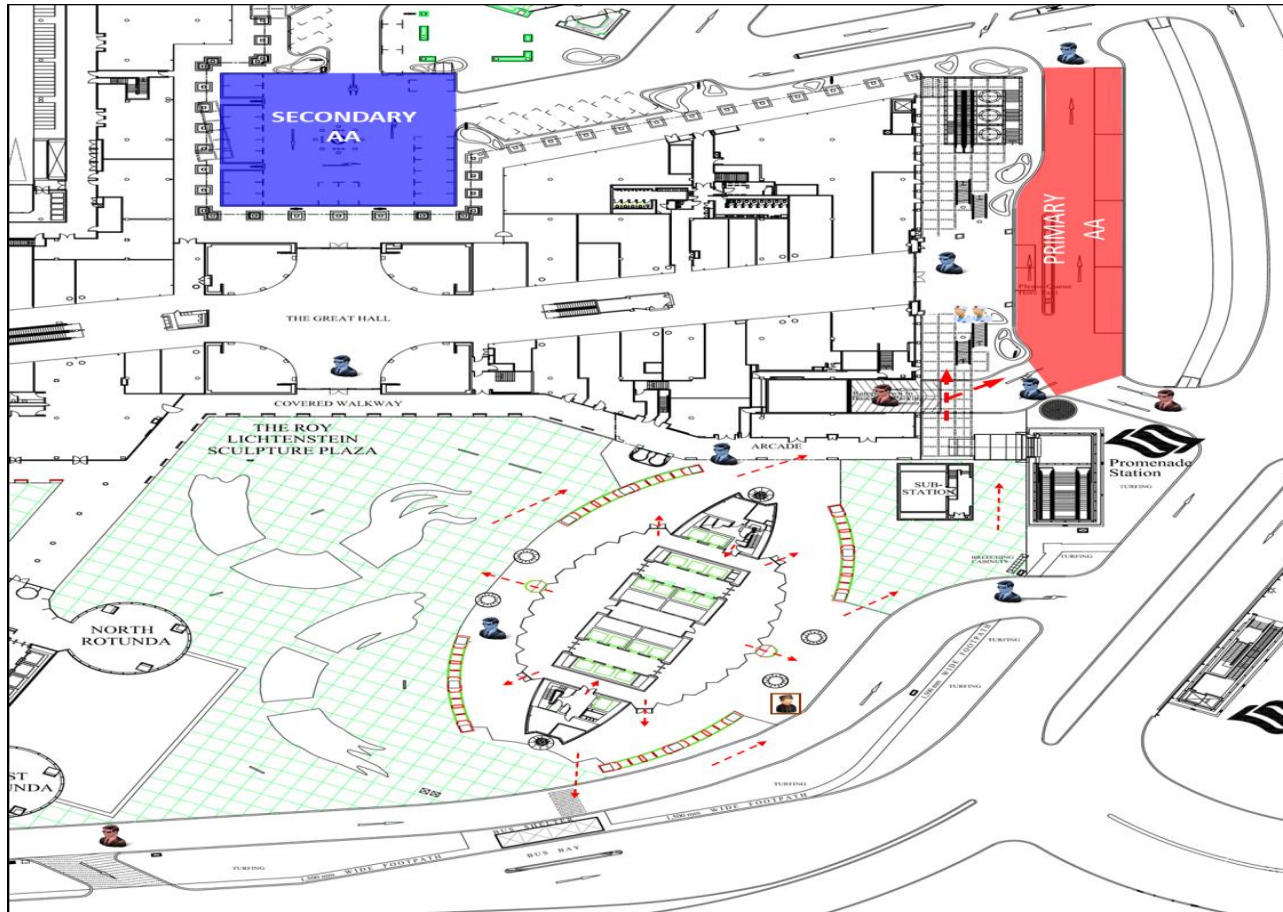


Legend


-  In-house Security
-  Agency Security
-  Security CERT
-  First Aider
-  Doorman



Centennial Tower



Legend

-  In-house Security
-  Agency Security
-  Security CERT
-  First Aider
-  Doorman



Surveillance

Look out for Suspicious Character(s) prolonged loitering in the vicinity of restricted area or sensitive sites...





Video or Photo-Taking

When conducting surveillance, terrorists might attempt to record images of sensitive areas either stationary or while travelling in a slow-moving vehicle...





Security

- Interested in security measures by finding about security procedures and personnel...
- Attempt to obtain sensitive information on key facilities, personnel or operations...





Test

Attempt to penetrate or test physical security and response...



Do Not Hesitate to Call.....

Duty Ops Mobile: 9230 0830





Be alert to tell-tale indicators of suspicious or malicious intent:

- Suspicious Character or Behaviour

Suspicious Person



Keep a look out for suspicious person

Suspicious person(s) can be detected by observing their behavior. The following are some descriptions of how a suspicious person may appear and behave:

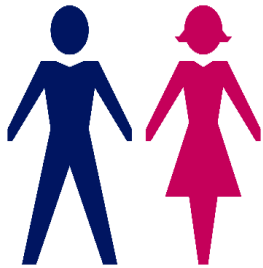
- Wearing bulky or oversized attire that may conceal hidden objects such as weapons or explosives?
- Having electrical wires sticking out from the clothing?
- Attempting to hide /disguise their identity?
- Deliberately avoiding eye contact with anyone?
- Taking notes, photos or video of location?
- Loitering with no clear intent?
- Entering into your property without appointment or prior notification?
- Wandering in the premise without proper clearance?
- Asking specific and security targeted questions?
- Asking questions about the personal movement of a specific or prominent individual?
- Making an unexpected delivery?
- Deliberately leaving an item or placing an object and departing the area?





What should you do when you see one?

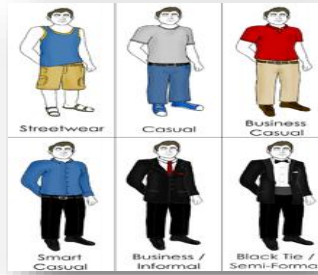
- Remain calm;
- Try to note down the description as much as possible;



Gender



Height



Attire



Race



Age

- If possible, raise the alert to a fellow co-worker
- Assess the situation and approach the person only if it's **SAFE** and you are **CONFIDENT** in handling
- Always be on your guard and expect the unexpected
- Else, observed from a distance and contact

Duty Ops Mobile: 9230 0833

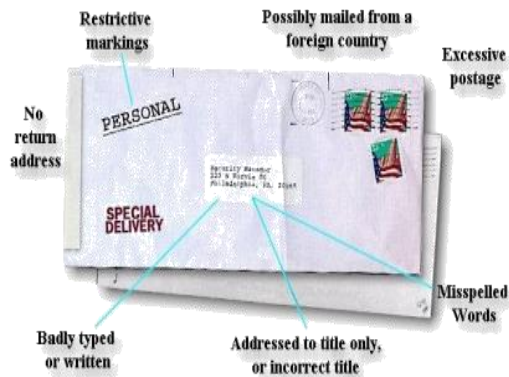


Be alert to tell-tale indicators of suspicious or malicious intent:

- Suspicious Character or Behaviour
- Articles or Parcels



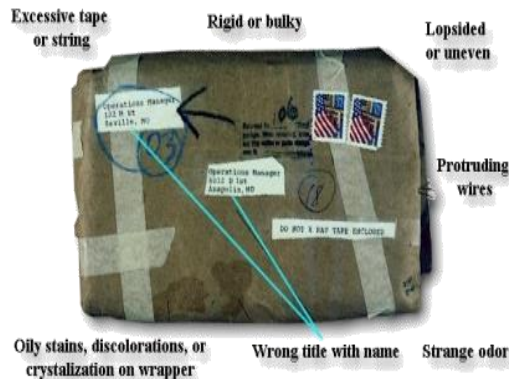
What makes it a Suspicious Letter?



This typically resembles a suspicious package but not limited to the following characteristics:

- Wire or aluminium foil protruding out of the parcel;
- Oily stains or discolouration on the exterior of the parcel;
- Buzzing or ticking sound;
- Unusual odour, smell akin to almond or marzipan etc.; and
- Other suspicious signs or characteristics to indicate that it contains explosives.

What makes it a Suspicious Package?



When a suspicious parcel is found...

- Raise the ALERT and contact the Security using the nearest landline.

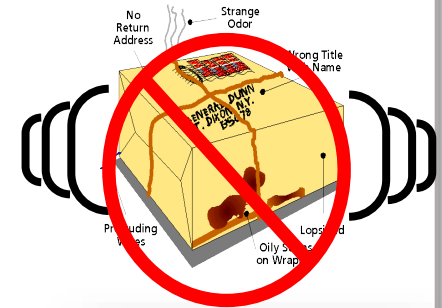
Duty Ops Mobile: 9230 0833

Suspicious Articles or Parcels



IMPORTANT: MOVE TO A SAFE LOCATION AND CONTACT THE SECURITY USING A LANDLINE.

- Contact the Security; **Duty Ops Mobile: [9230 0833](tel:92300833)**
- Avoid handling or trying to open the package;
- Avoid shaking or trying to empty it;
- Avoid sniffing the package or tasting any substance associated with it;
- Do not attempt to submerge the device or parcel;
and
- Placed the package in a corner of the room;
- Open the windows and evacuate the room with the door opened;
- Do not discuss or speculate the find openly with your colleagues;
- The person who found the device must remain to brief the police on the exact location and description...





Be alert to tell-tale indicators of suspicious or malicious intent:

- Suspicious Character or Behaviour
- Articles or Parcels
- Suspicious Vehicle - Car

Suspicious Vehicles



- Abandon vehicles along road side
- Overly weighted vehicle.

NEW YORK TIME SQUARE CAR BOMB

- New vehicle license plate mounted on old car.
- Presence of suspicious items

Vehicle that seemingly “heavy” with hidden explosive in the boot.



Low ride height at the rear wheels



Be alert to tell-tale indicators of suspicious or malicious intent:

- Suspicious Character or Behaviour
- Articles or Parcels
- Suspicious Vehicle - Car

Do Not Hesitate to Call.....

Duty Ops Mobile: **9230 0833**



<https://www.sgsecure.gov.sg/resources>

RUN

RUN AWAY FROM DANGER

Consider the safest route and move quickly and quietly to stay out of view of the attackers. Do not surrender or attempt to negotiate. Insist others leave with you. Leave your belongings behind.



HIDE

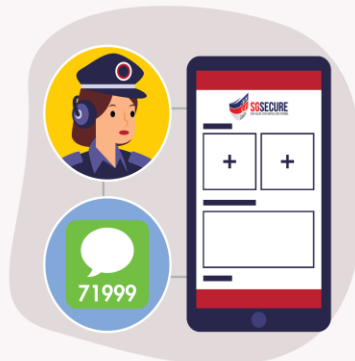
IF YOU CAN'T ESCAPE, HIDE

Hide and stay out of sight. Place heavy objects such as tables behind doors to prevent access by attackers. Move away from doors. Be very quiet and switch your phone to silent mode.

TELL

INFORM THE POLICE

When it is safe to do so, call the Police at 999. SMS 71999 if it is not safe to talk. Provide details on your location and the attackers. Use the SGSecure app to provide more information, photos and videos to the Police.



TIE

Tie at least 5cm above the wound using items such as a neck tie, belt or sling of a bag to stop any excessive bleeding. This is only applicable for limbs. (If bleeding still does not stop, apply the windlass technique).



PRESS

Press directly on the wound to stop the bleeding using items such as a handkerchief or cloth. (If bleeding does not stop, proceed to tie).

WINDLASS TECHNIQUE ADDITIONAL STEPS IF BLEEDING PERSISTS

- 1 Tie at least 5cm above the first tie
- 2 Place a rod (pen or wooden stick) on the second tie and secure the rod
- 3 Turn the rod in one direction until the bleeding stops
- 4 Secure the rod by tying a knot

TELL

Tell SCDF Emergency Responders about the injury and the time when you tied the wound.

