



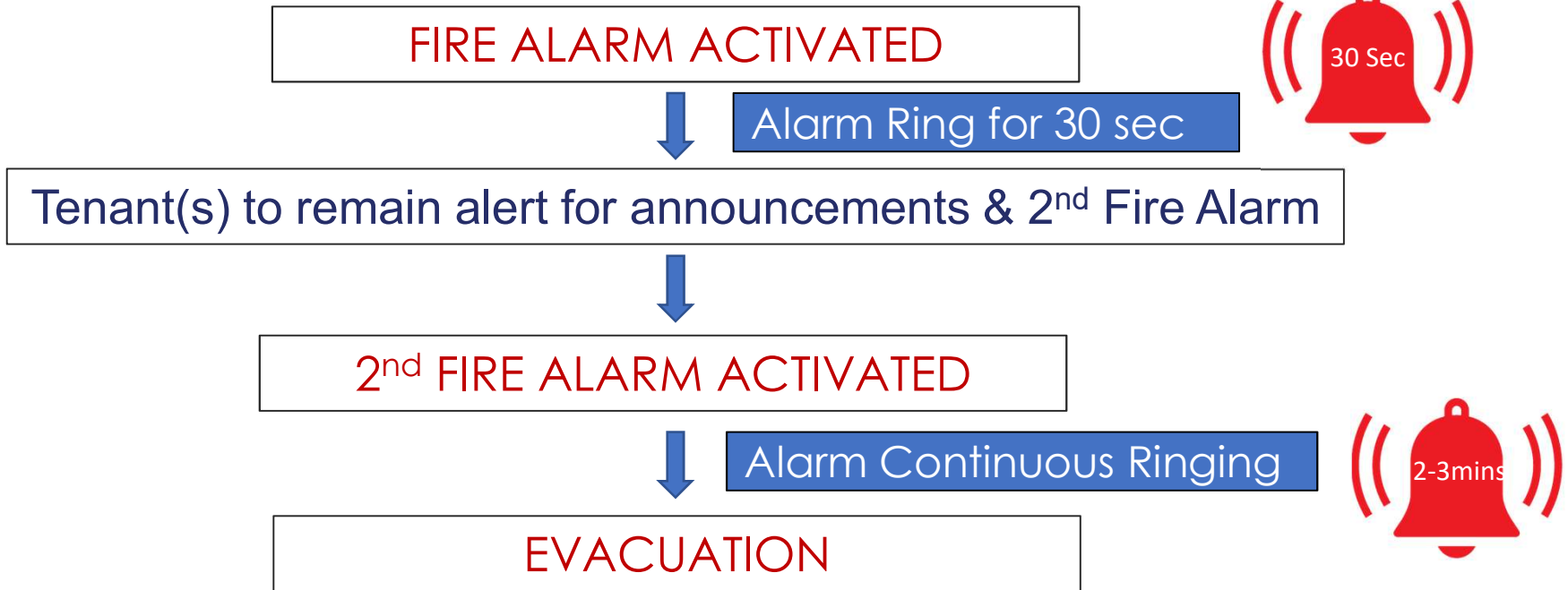
Fire Safety

Not to be distributed or reproduced without permission.



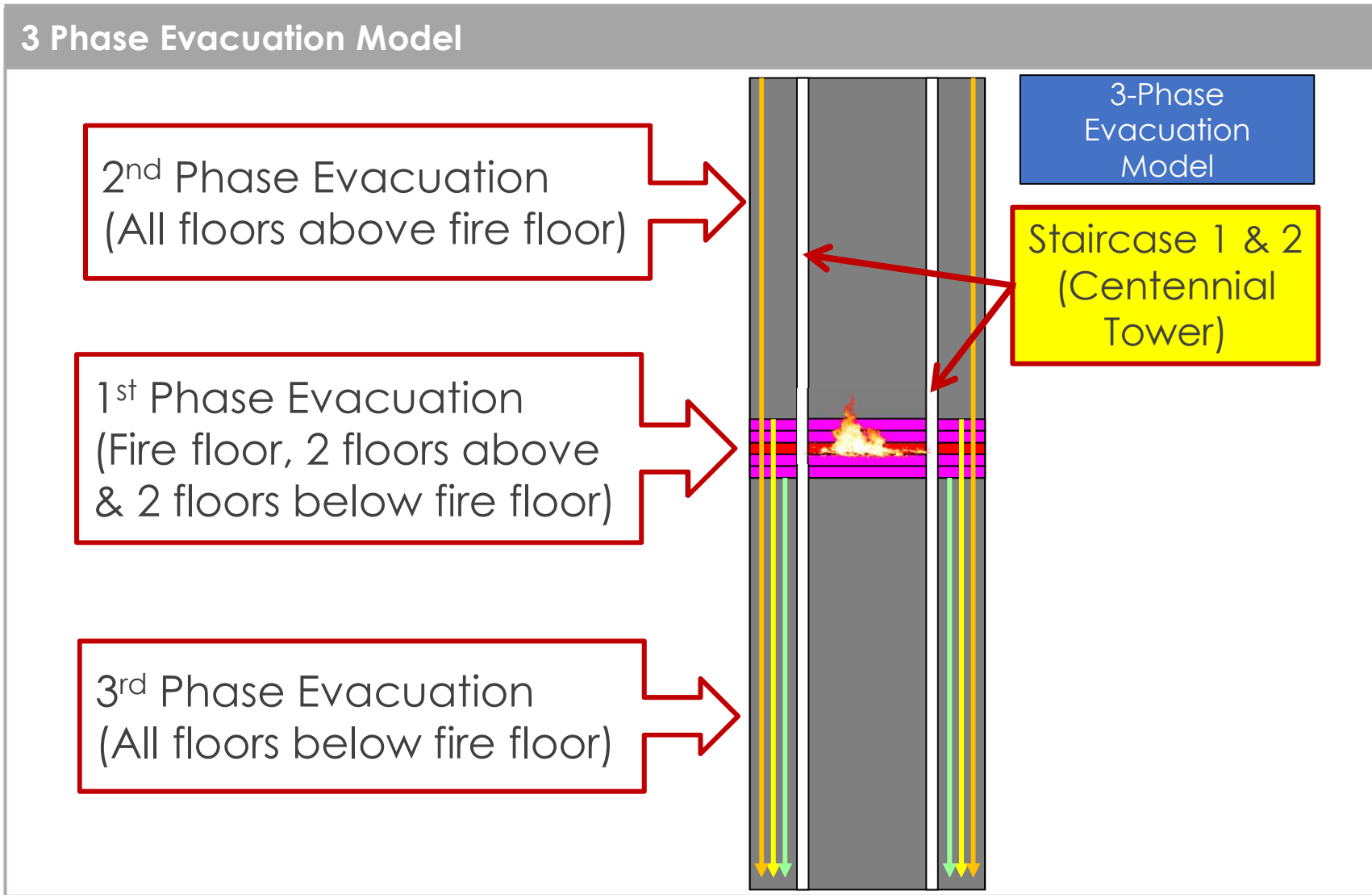
Evacuation

Evacuation Sequence



- Tenants(s)**
- Evacuate in an orderly manner using escape stair case.
 - Help any person(s) in need of assistance. Example: handicapped etc.
 - Used Emergency phone to seek assistance
 - Report to Assembly Area Coordinator
 - DO NOT RETURN TO UNIT

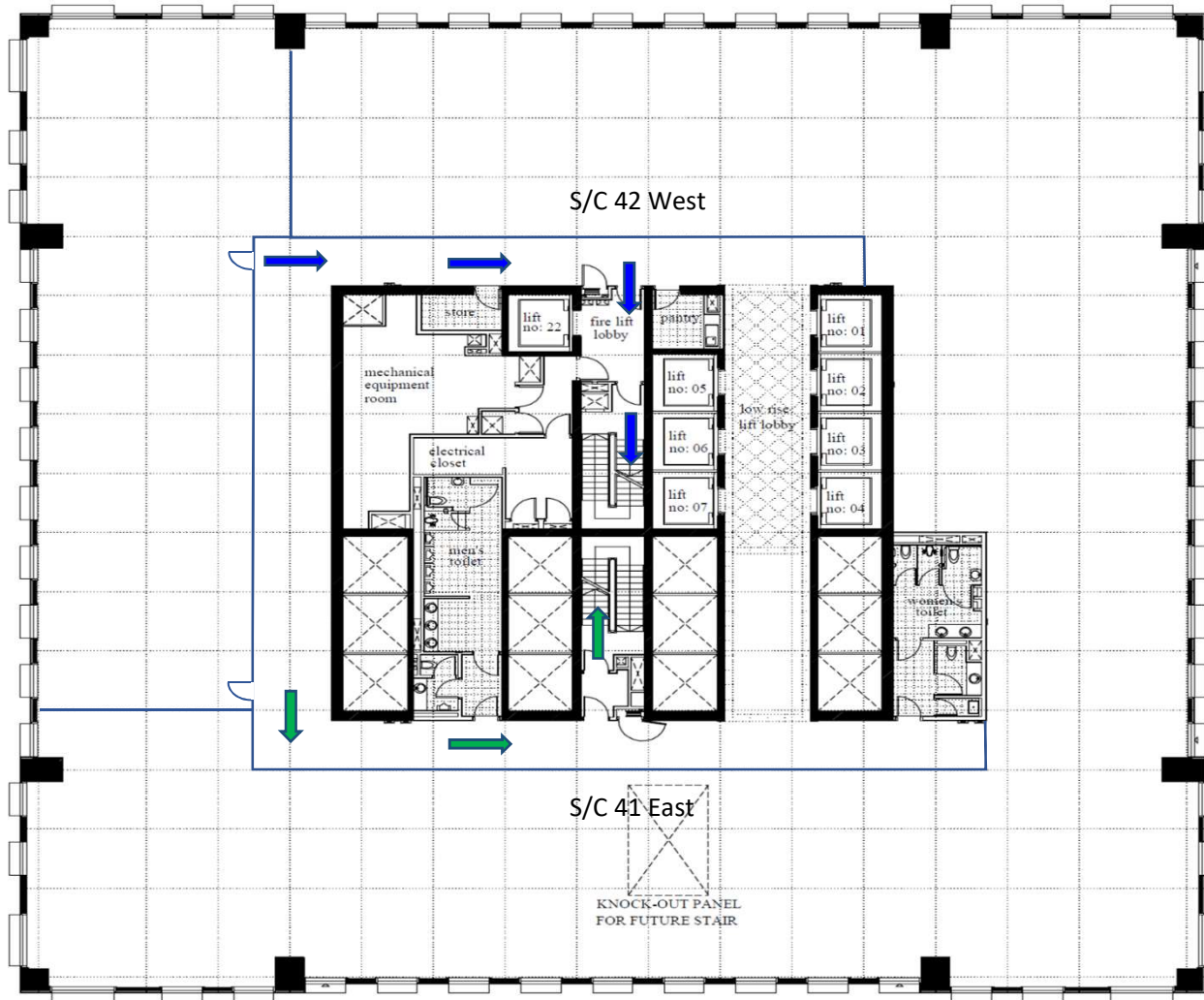
Fire Escape Route : Centennial Tower



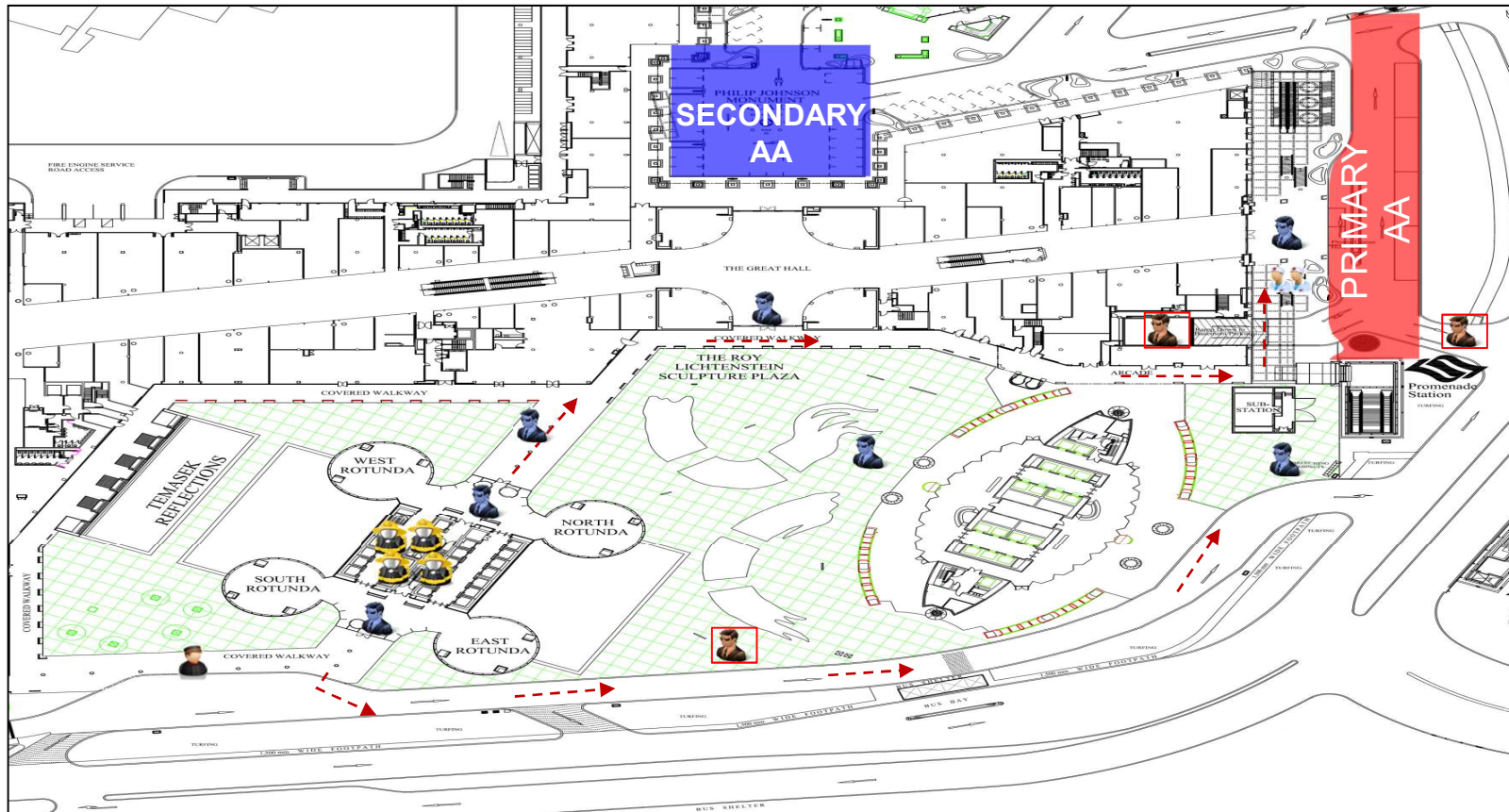
Millenia Tower



FIRE ESCAPE ROUTE FOR LEVEL 09



Fire Escape Route : Millenia Tower



Legend



In-house Security



Agency Security



CERT



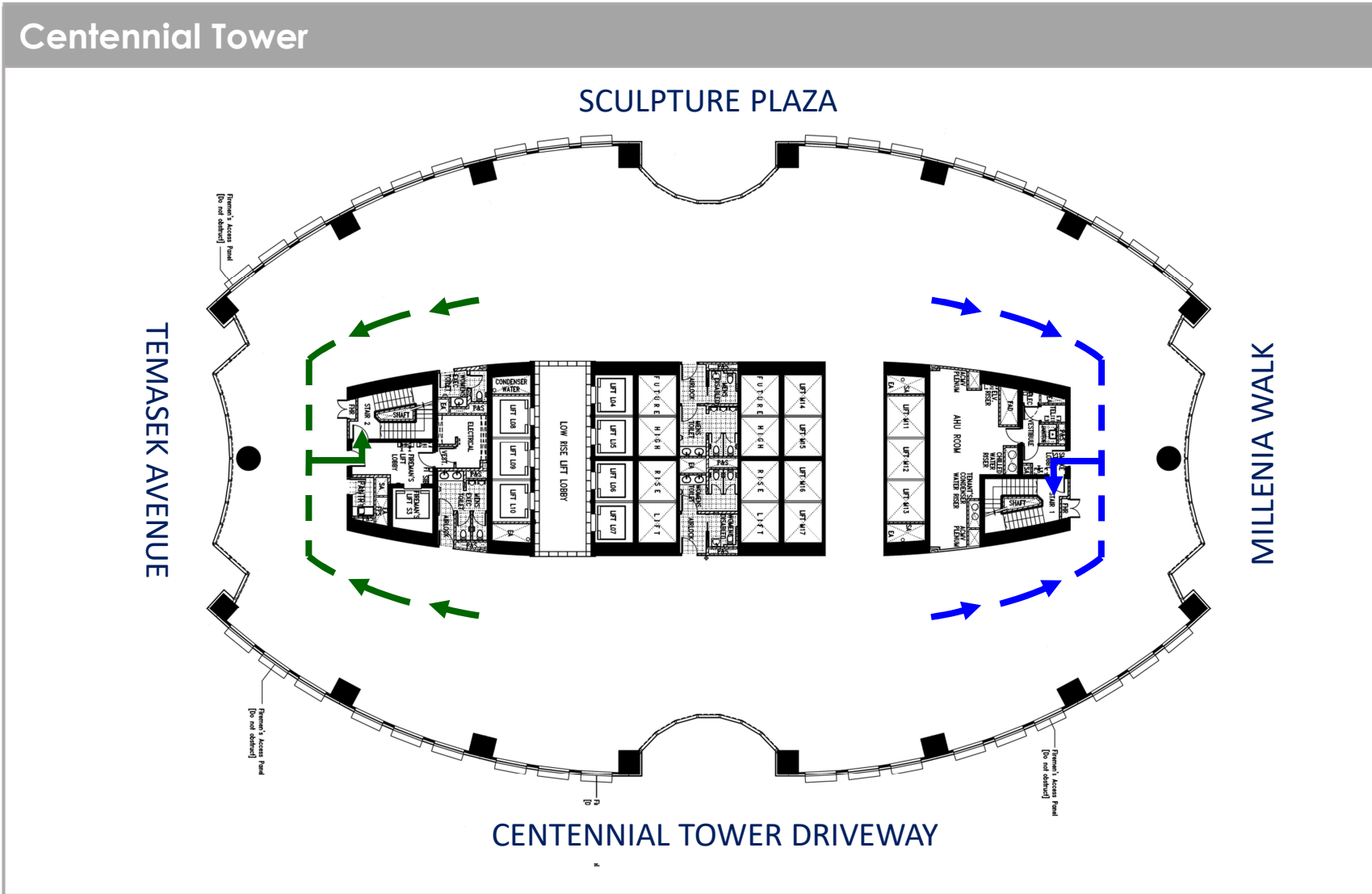
First Aider



Doorman

Centennial Tower

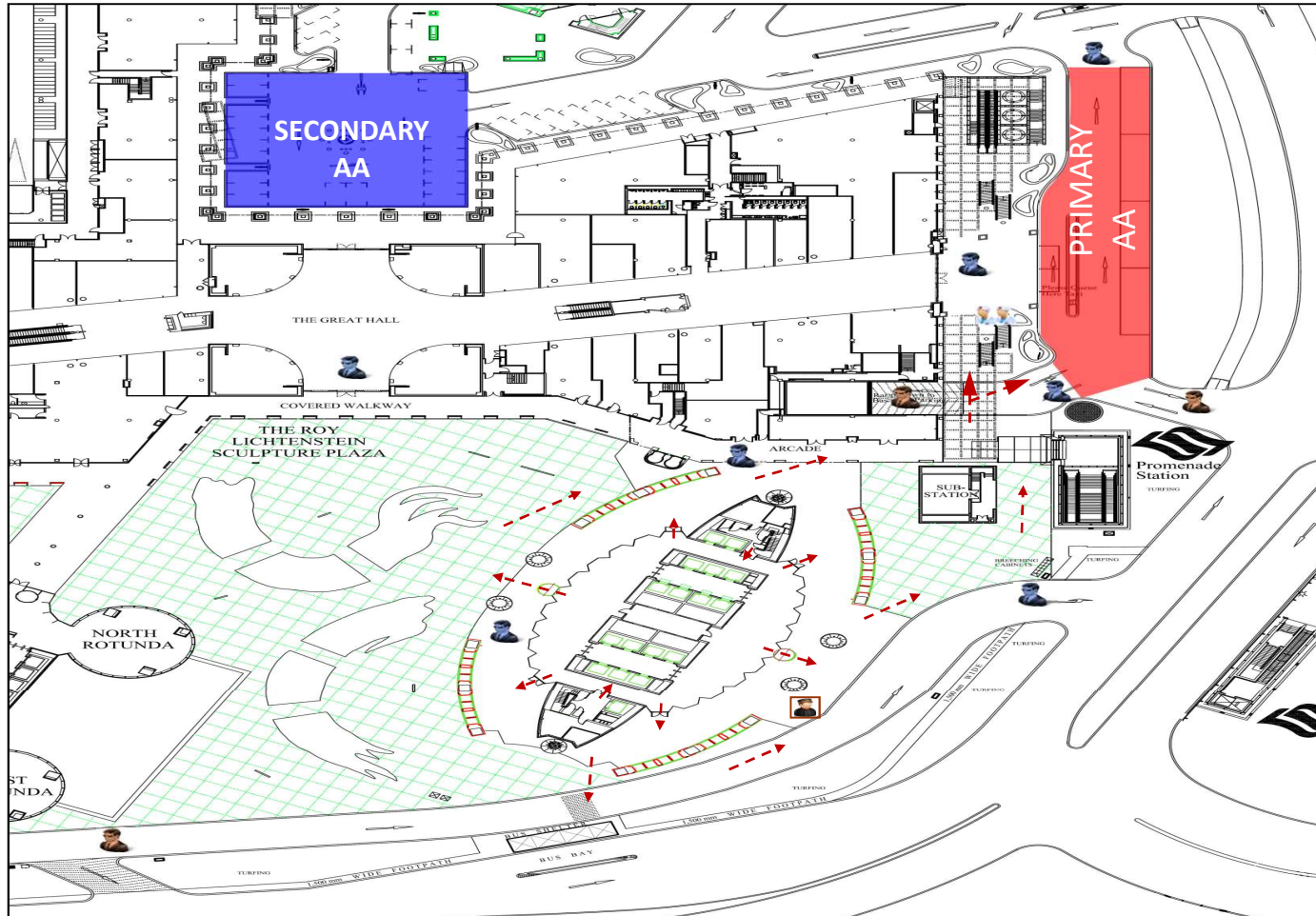
Fire Escape Route : Centennial Tower








Fire Escape Route : Centennial Tower



Centennial Tower



Legend

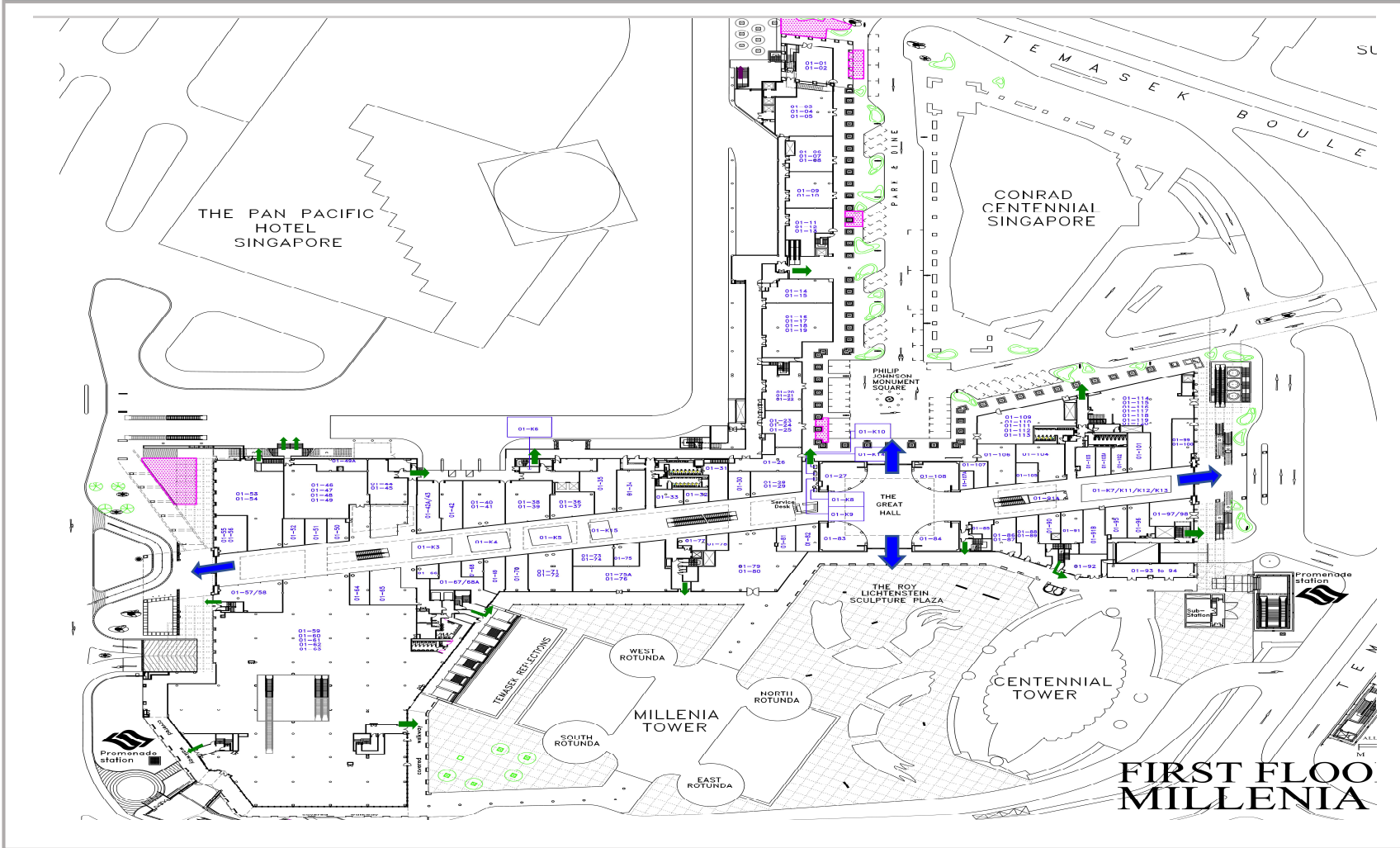
-  In-house Security
-  Agency Security
-  Emergency Response Team
-  First Aider
-  Doorman

Millenia Walk

Fire Escape Route : Millenia Walk



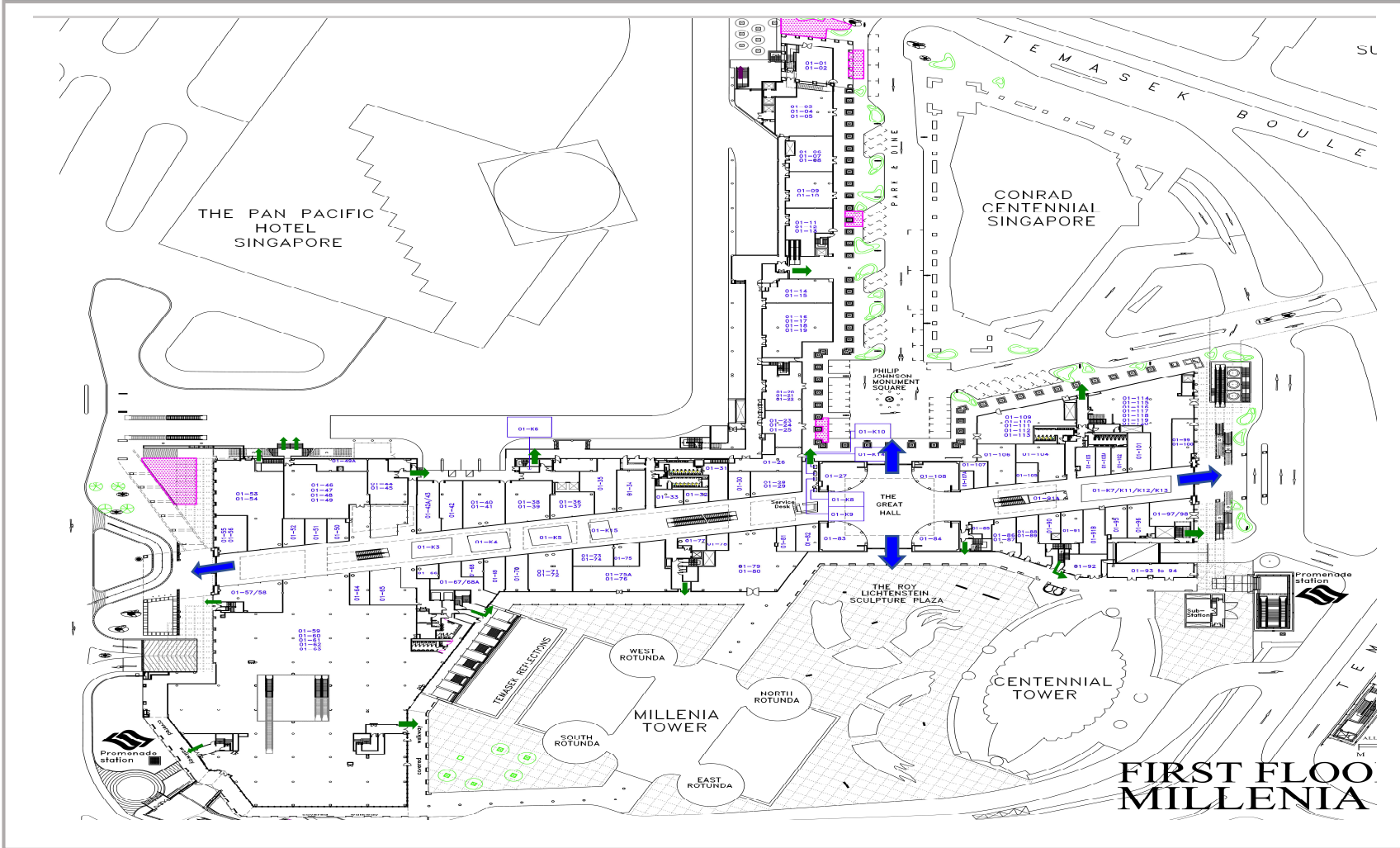
Millenia Walk Level 1



Fire Escape Route : Millenia Walk



Millenia Walk Level 2



What should I do at the Assembly Area (AA)?



For Fire Wardens

Conduct attendance taking at the Assembly Area (AA)
Submit the completed list to the AA Coordinator



Evacuation status for individual floors will be indicated on
the whiteboard facing the Assembly Area



**Attendance sheet of all
floors received**

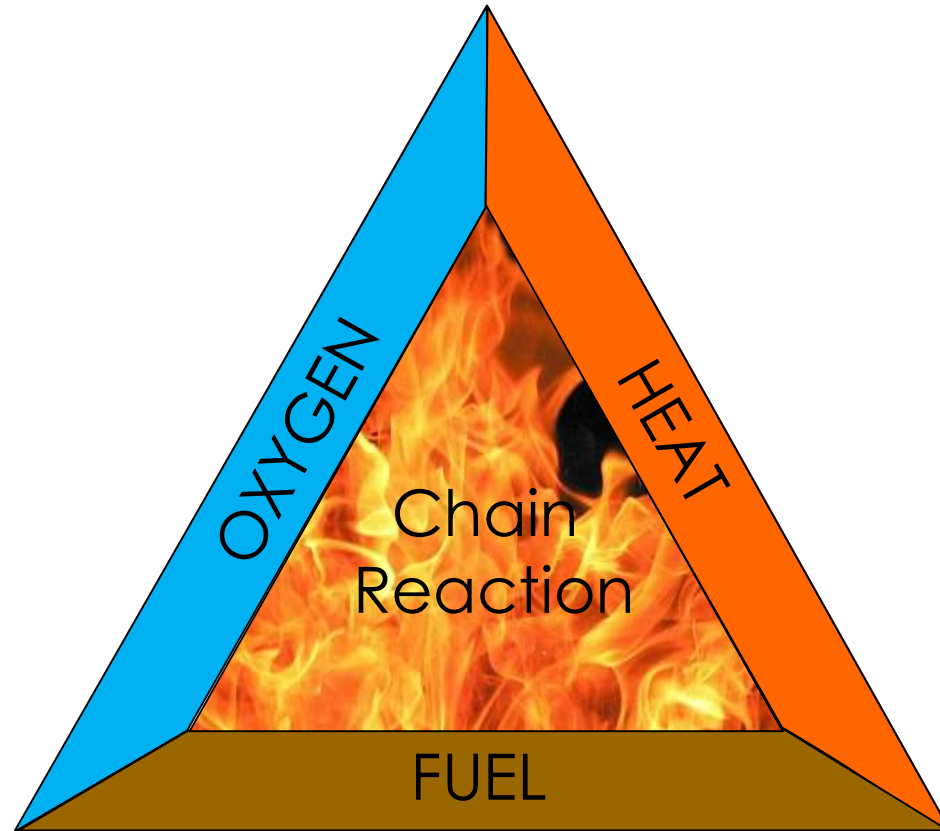
**Wait at the AA for the dismissal
announcement**

Using a Fire Extinguisher

WHAT HAPPENS IN A FIRE?



What is a Fire?



Fire Tetrahedron

WHAT HAPPENS IN A FIRE?



Types of Fire

Class A: Ordinary combustible material (wood, clothes, paper, rubber, etc)

Class B: Flammable liquids, solvents, oils, paints, thinner and liquefiable solids

Class C: Flammable gases
Example: LPG
Liquefied petroleum gas



How to use fire extinguisher



Fire Extinguisher



Dry Powder Fire Extinguisher

Chemical: Siliconized mono ammonium phosphate

Propellant: Nitrogen (Inert gas)

Classified Toxicity: Non-Toxic

Inhalation: YES; may be irritant to the respiratory tract.

Eye contact: YES; mildly irritant for a short period.

Skin contact: YES; may be mildly irritating



How to use fire extinguisher



Fire Extinguisher: P.A.S.S

P **STEP 1:**
PULL OUT THE SAFETY PIN
Twist to break off the
safety pin strap



A **STEP 2:**
AIM AT THE BASE OF THE
FIRE. Keep a safe distance
of 1.0 – 1.5m from the flame





Fire Extinguisher: P.A.S.S

S

STEP 3:
SQUEEZE THE HANDLE OF THE
FIRE EXTINGUISHER



S

STEP 3:
SWEEP THE NOZZLE FROM
SIDE TO SIDE WHILE
DIRECTING THE DISCHARGE AT
THE BASE OF THE FIRE



Common Fire Hazard



Exercise caution when using scented candles



- Don't leave burning candles in the office unattended.
- Don't burn candle all the way down
- Never move candle while burning
- Lit candles should be placed in a stable holders on a heat-resistant surface and kept away from combustibles such as paper, cardboard, decorations or curtains



Fire Safety Tips for Christmas Tree



- a) Check for any damaged wires, lighting connections and plugs.
- b) Turn off all decorative lights/lanterns when leaving home.
- c) Sparkle from the melting socket caused by the overheating of lights or lanterns will ignite a fire.
- d) Do not overload electrical outlets. Spread out the additional electrical appliances.



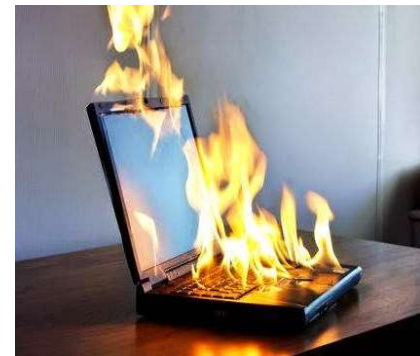


Electrical appliances and fixtures



Electrical fires happens,

- overloading with electrical appliances
- frayed wires or broken cord etc
- Always switch off appliances when not in use
- Do not run wires under carpets or mats and keep them away from hot surfaces
- Use only appliances and electronics plugs bearing the approved SAFETY mark





Tell tales signs of faulty light switches



(i) **Temperamental Lights**

When a light switch is turned on and it takes a moment for the light to go on.

(ii) **Sparking Switches**

It is normal to see a small spark inside the switch when turning it "OFF".

However, when this spark is accompanied by an audible noise, it can indicate a faulty light switch.

(iii) **Noisy Switches**

Faulty light switches can make a variety of electrical sounds

(iv) **Switches which does not "Feel" right**

If the switch toggle lever starts behaving differently, for e.g. losing its "snap" or becoming stiffer than usual

Common Fire Hazards



Keeping the Escape Passageways Clear



Escape passageways should be free of obstruction and fire exit doors should be kept accessible at all times for use during emergencies



Good Housekeeping



Do not store combustible materials/objects, e.g. papers, carton boxes, along common corridors, especially those less than 1.2m wide

Common Fire Hazards



Stay within occupancy load



Avoid overcrowding and stay within the safe occupancy load in the unit.
Every additional person over the safe occupant load reduces the efficiency of escape during emergency

DISCLAIMER



This document is prepared by Pontiac Land for information only. Whilst reasonable care has been exercised in preparing this document, it is subject to change and these particulars do not constitute, nor constitute part of, an offer or contract; interested parties should not rely on the statements or representations of fact but must satisfy themselves by inspection or otherwise as to the accuracy. No person in the employment of the agent or the agent's principal has any authority to make any representations or warranties whatsoever in relation to these particulars and Pontiac Land cannot be held responsible for any liability whatsoever or for any loss howsoever arising from or in reliance upon the whole or any part of the contents of this document.



Not to be distributed or reproduced without permission.